

Schedule 1

Item 1 Description of Agreement Area

A. External boundary description

The agreement area covers all the land and waters within that part of Lot 8 on Plan CP892351 (Dynevor Downs) located within the Native Title Determination Application QUD53/2007 Budjiti People (QC2007/002), further described as that part of that lot east of a ridgeline described by the following coordinate points:

Longitude ° East	Latitude° South
143.989898	28.241289
143.992419	28.239435
143.994219	28.237012
143.995632	28.235050
143.998284	28.233252
144.001953	28.232605
144.005348	28.232676
144.010200	28.232462
144.015049	28.230539
144.018990	28.227889
144.022418	28.224745
144.025653	28.221945
144.028630	28.218684
144.030572	28.215992
144.032385	28.212553
144.035556	28.208316
144.038534	28.203388
144.041963	28.199842
144.044164	28.196289
144.047076	28.193143
144.050247	28.189365
144.053612	28.185704
144.056718	28.182846
144.060467	28.180679
144.064480	28.178227

then generally northerly, north westerly and again northerly to the Bulloo Developmental Road through the following coordinate points;

Longitude ° East	Latitude° South
144.067132	28.175252
144.069204	28.171584
144.070758	28.168316
144.071344	28.162744
144.070377	28.158600
144.069022	28.155490
144.067536	28.153241
144.063660	28.149140

Longitude ° East	Latitude° South
144.060558	28.146423
144.056746	28.143243
144.052287	28.140349
144.047439	28.137853
144.042010	28.134721
144.036970	28.131075
144.033222	28.127493
144.029928	28.123050
144.026959	28.116311
144.024829	28.111529
144.022763	28.106461
144.021021	28.101682
144.019345	28.095523
144.017927	28.089424
144.016120	28.084127
144.015607	28.078262
144.015355	28.069869
144.015878	28.062285
144.016206	28.055791
144.017051	28.049991
144.018283	28.045514
144.018868	28.040344
144.020422	28.035581
144.022109	28.031279
144.024049	28.027898
144.027156	28.024752
144.030390	28.022180
144.033107	28.020010

then generally north easterly passing to the west of Lakes Bidegolly, Toomaroo and Hutchinson through the following coordinate points

Longitude ° East	Latitude° South
144.037635	28.017619
144.041968	28.015169
144.046432	28.011916
144.051737	28.007976
144.055824	28.004647
144.059132	28.000576
144.061186	27.996242
144.062341	27.992080
144.063042	27.987213
144.063577	27.982574
144.065166	27.976100
144.067013	27.969109
144.070464	27.960166
144.072960	27.954662
144.073595	27.952926
144.075898	27.946637
144.078584	27.940159

Longitude ° East	Latitude° South
144.083270	27.933666
144.083270	27.933666
144.086476	27.928798
144.091226	27.922828

Note

Reference datum

Geographical coordinates have been provided by the NNTT Geospatial Unit and are referenced to the Geocentric Datum of Australia 1994 (GDA94), in decimal degrees and are based on the spatial reference data acquired from the various custodians at the time.

Data Reference and source

Agreement boundary compiled by National Native Title Tribunal based on information or instructions provided by the applicants.

Native title determination application QUD53/2007 Budjiti People (QC2007/002) as accepted for registration on 10 July 2007.

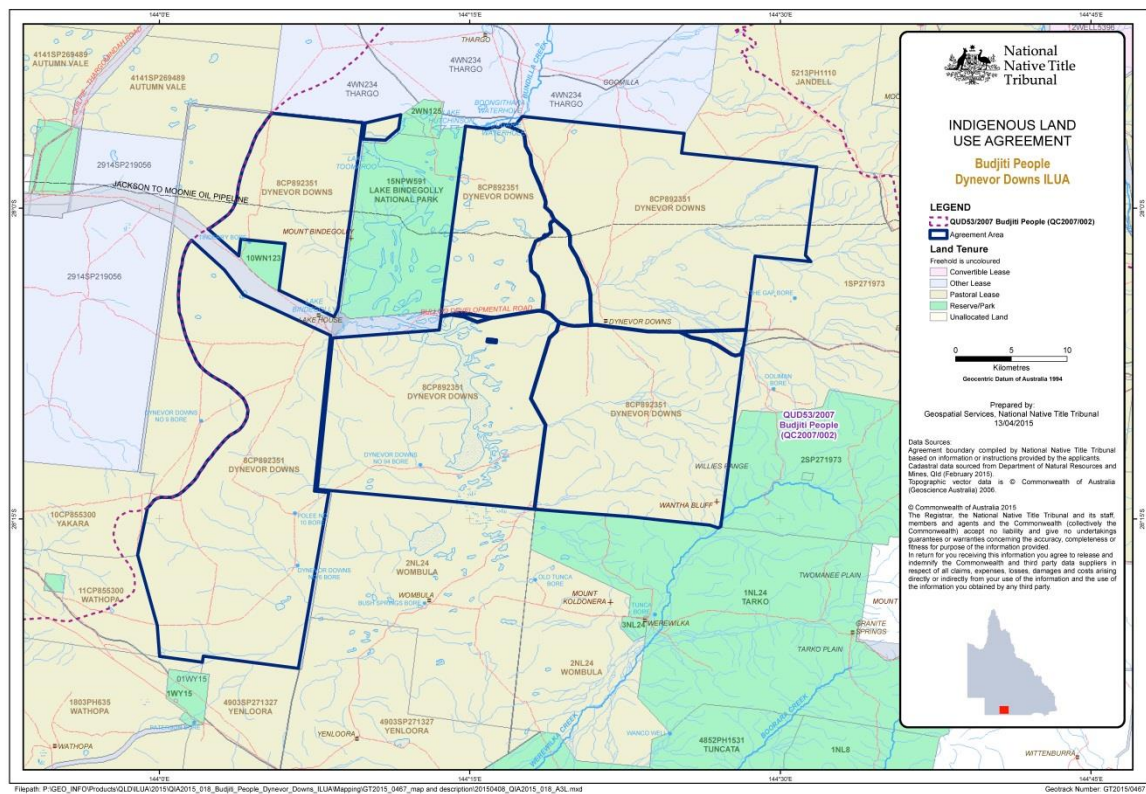
Cadastral data sourced from Department of Natural Resources and Mines, Qld (February, 2015).

Rivers / Creeks based on cadastral data.

Use of Coordinates

Where coordinates are used within the description to represent cadastral or topographical boundaries or the intersection with such, they are intended as a guide only. As an outcome to the custodians of cadastral and topographic data continuously recalculating the geographic position of their data based on improved survey and data maintenance procedures, it is not possible to accurately define such a position other than by detailed ground survey.

B. Map



- Item 2 Description of Lease**
 Pastoral Holding 15/5571 comprising Lot 8 on CP892351
- Item 3 Description of Lessee**
 Michael Gibson and Marie Therese Gibson